

OUR STORY

Central Valley Ag (CVA) Cooperative, a farmer-owned cooperative operating in Iowa, Kansas and Nebraska, has been a trusted provider of feed products and services to its members since 2003. As a forward-thinking leader in the industry, CVA continuously adapts to evolving market dynamics, particularly in response to consumer demands for safe and nutritious animal food.

In 2023, CVA demonstrated its commitment to meeting these demands by converting its Duncan, Neb., Feed Mill to antibiotic-free production. This strategic move opens new avenues for producing high-value, antibiotic-free feed across several species, including horses. By embracing this change, CVA not only aligns with consumer preferences but also reinforces its dedication to promoting animal welfare and sustainable agriculture practices.

OUR LOCATION

Located in the heart of the Midwest, CVA's Duncan, Neb. facility has unparalleled access to the region's abundant fresh ingredients, crucial for crafting our premium Empyrean line.

At CVA, we hold ourselves to the highest standards of integrity and quality assurance. Our unwavering commitment to traceability, coupled with our rigorous drug-free and ionophore-free protocols, underscores the Duncan mill's suitability as the production hub for the Empyrean line.



OUR PARTNERS

KENTUCKY EQUINE RESEARCH

Kentucky Equine Research (KER) is an international equine nutrition, research, and consultation company serving horse owners and the feed industry. The synergy between KER's proficiency and CVA's manufacturing expertise presents an ideal partnership. The Empyrean product line, fortified with KER's meticulously crafted vitamins and minerals, exemplifies the pinnacle of their collaborative efforts. Furthermore, both entities collaborate closely to devise precise formulations for all products, ensuring optimal nutrition and performance for equine enthusiasts worldwide.

BIOZYME

BioZyme has served the agriculture industry as an innovator in fermentation and animal health, offering supplements and animal health products for a variety of animals. Their product, **AO-Biotics® Amaferm®**, is a prebiotic research-proven to enhance digestibility. Amaferm® is an additive in all of the Empyrean products, increasing the cool energy in equine, with better digestibility, creating more energy and better performance.

EMPYREAN™

EQUINE FEED FOR LIFE

MAINTENANCE PELLET

Formulated for sedentary or maintenance horses needing calories to maintain weight and condition, this feed contains multiple calorie sources to ensure the needs of mature horses are met. The digestible fiber source – soybean hulls – supports hindgut function, providing energy through fiber fermentation. The minimum feeding rate is 6 lb per 1000-lb horse.

PERFORMANCE PELLET

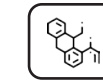
Designed for working horses with high-energy needs, added fat provides cool energy for moderate to intense exercise to help maintain body condition, shine, and bloom. This moderate nonstructural carbohydrate formula is a rapidly available energy source for fueling muscle and delivering necessary nutrients. The minimum feeding rate is 6 lbs per 1000 lbs per horse.



WHY EMPYREAN

CVA Empyrean sets the gold standard as a year-round equine feed solution, designed to support horses throughout their lives. Formulated with meticulous care, Empyrean boasts a powerful blend of nutritional elements to optimize equine health and performance.

With CVA Empyrean, horse owners can trust in a superior feed solution that prioritizes health, longevity, and peak performance, making it the preferred choice for equine enthusiasts worldwide.



ADDITIVES

KER's premix provides all the essential trace minerals and vitamins your horse needs. This premix includes both organic and inorganic sources of trace minerals, B vitamins and Amaferm for digestive support.



GUT HEALTH

The ingredients we use, like fermentable fiber, are chosen to enhance gut health in horses. Including Amaferm further boosts this by promoting better digestion and nutrient absorption, contributing to overall equine well-being.

FEATURES AND BENEFITS

RESEARCH-PROVEN INGREDIENT SOURCES

Bio-available inorganic and organic minerals. Added natural-source vitamin E & added B vitamins to help maintain metabolic function.

CONSISTENT NUTRIENT PROFILE

Empyrean offers a complete and balanced nutrient profile, ensuring that your horse receives essential vitamins, minerals, and other nutrients with every feeding.

OPTIMAL DIGESTIVE SUPPORT

Empyrean contains Amaferm to support healthy gut function and alleviate digestive issues.

QUALITY ASSURANCE

Empyrean undergoes rigorous quality control measures to ensure consistency, safety, and efficacy, providing peace of mind for horse owners.

TRUSTED PARTNERSHIPS

With KER's involvement in formulation and quality assurance, Empyrean benefits from the expertise of a renowned equine nutrition and research organization.



EMPYREAN™
EQUINE FEED FOR LIFE



DUNCAN FEED MILL
28115 158th St, Duncan, NE
Phone: (402) 897-3315
Duncan.Orders@cvacoop.com

cvacoop.com/empyrean



EMPYREAN™
EQUINE FEED FOR LIFE